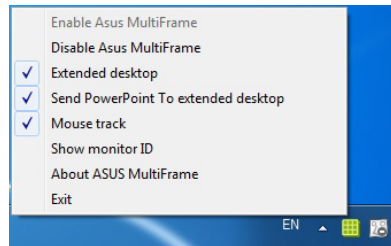


# ASUS MultiFrame

ASUS MultiFrame helps you easily divide the window and make the windows transferred easily when you open many windows, offering you convenience in web browsing and data mutual reading.

## Using ASUS MultiFrame

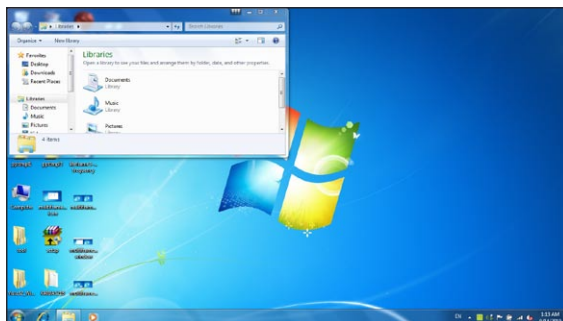
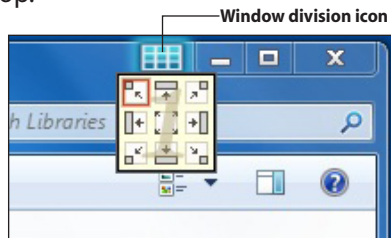
1. Launch **ASUS MultiFrame** by clicking **Start > All Programs > ASUS Utility > MultiFrame**.
2. Right-click the MultiFrame icon in the Windows® notification area to show the function panel.



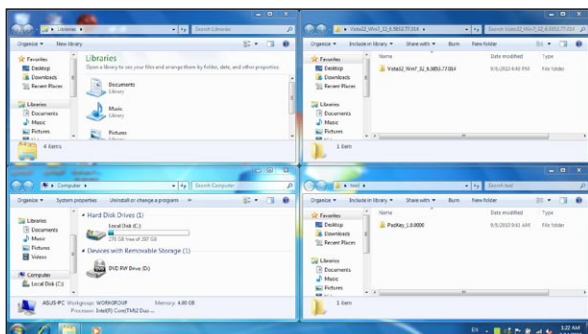
## Windows division

The windows division function allows you to decide how the opened window is positioned on the desktop.

1. When opening a window, point the mouse to the position as shown in the picture and the window division icon will appear.
2. Click the division icon and then click from one of the nine(9) divisions as you want, and the window will be positioned accordingly. For example, if you select the upper-left corner division, the window will be positioned on the upper-left part of the desktop as in the following picture.

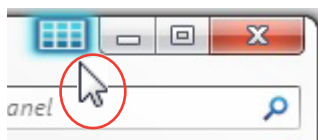


You can also divide the desktop into four(4) parts with four(4) opened windows at the same time, as in the following picture.

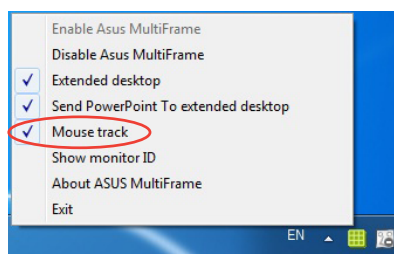


## Mouse Track

The mouse track function lets you easily find your mouse pointer on a divided window right after you execute the window division.



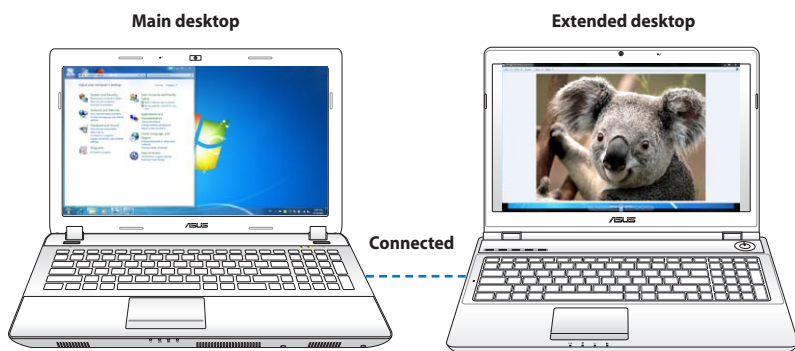
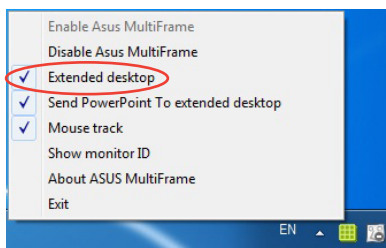
Right-click the MultiFrame icon in the windows notification area and click **Mouse track** to enable this function.



## Extended desktop

The extended desktop function extends the main desktop to the monitor of the other notebook PC, computer, or projector that is connected to your main Notebook PC, offering more desktop space for simultaneous multi-window processing.

Right-click the MultiFrame icon in the windows notification area and click **Extended desktop** to enable this function.



## Show monitor ID

The Show monitor ID function shows monitor ID to indicate the main monitor and the secondary monitor for your easy identification when the two monitors have the same content on them.

Right-click the MultiFrame icon in the windows notification area and click **Show monitor ID** to enable this function.



## Send PowerPoint to extended desktop

This function allows you to send the PowerPoint file that you are presenting to the secondary monitor.

Right-click the MultiFrame icon in the windows notification area and click **Send PowerPoint To extended desktop** to enable this function.

