



EPAD™

USER'S GUIDE

PRODUCT FAMILY REFERENCE

P/N: 94-21488 Rev. B

ePad-POS, ePad II, ePad-i.d., ePad-i.d. Pro, ePad-ink, ePad-ink Pro and **ePad LS** are trademarks, and ePadLink and the six dot logo are registered trademarks of ePadLink All other trademarks are the property of their respective owners.

¹NCR Patent information: This product was produced under the following United States patents and their foreign equivalents: 5,195,133 and 5,297,202.

ePad Product Family User's Guide P/N 94-21488 Rev. B

© 2009 EPadLink All rights reserved.

Table of contents

Part I

Introduction	5
About the ePad electronic signature product family	5
The standard ePad	5
The ePad-POS	5
The ePad-ink	6
The ePad-i.d.	6
ePad II	6
ePad-ink Pro	6
ePad-i.d. Pro	7
ePad LS	7
The contents of your package	8
Installing your ePad	9
System requirements for all ePad products:	9
Installing the ePad Serial/USB and ePad II	9
Installing the ePad Serial from CD-ROM	9
Installing the ePad USB and ePad II from CD	10
Installing the ePad USB and ePad II device	10
Installing the ePad USB and ePad II drivers	10
Installing the ePad-i.d. and ePad-i.d. Pro	11
Automatic software installation	11
Manual ePad-i.d. software installation	11
ePad-i.d. and ePad-i.d. Pro hardware installation	12
Connecting the USB Cable	12
Power Supply	12
Capture Ready LED	13
Installing the ePad-ink and ePad-ink Pro	14
ePad-ink and ePad-ink Pro Software Installation	14
Installing the ePad-ink and ePad-ink Pro Device	14
Installing the ePad-ink and ePad-ink Pro drivers	14
Uninstalling ePadLink' ePad Software	15
Installing the ePad LS	16
Installing the ePad LS hardware	16
Installing the ePad LS	17
Replacing the protective layer of the ePad LS	17
Miscellaneous	19
Specifications	19
Thin Client Support Matrix	22
Troubleshooting	23
Care and Maintenance	24
Technical Support	26
Mailing Address	26

Web.....	26
ePad-ink FCC Certification.....	27
CE Conformity.....	28
CB Safety Certification	28

Part II

IntegriSign Desktop User Manual.....	38
Copyright	38
Disclaimer	38
Trademarks	38
1. Welcome	39
2. Where to find information	39
2.1 IntegriSign Desktop Help	39
3. Installing/Uninstalling IntegriSign Desktop.....	40
3.1 Before you begin	40
3.2 Installing the ePad device	40
3.3 Running IntegriSign Desktop Setup.....	41
3.4 Known Installation issues.....	42
3.5 Uninstalling IntegriSign Desktop	42
4. Preferences.....	43
4.1 IntegriSign Desktop - Configuration	44
4.2 Creating User Profile	45
4.3 Setting other Preferences.....	46
5. IntegriSign Desktop Plug-ins	46
5.1 Overview	47

Introduction

About the ePad electronic signature product family

ePadLink electronic signature pads (ePad) are pen input devices that capture hand-written signatures for use in PC applications. The ePad product family is by far, the most durable and flexible in the market. Designed to mimic the natural feel of signing on paper, the ePads can be used on the desktop, yet are small and light enough to take on the road. Forms requiring signature approvals can now be completed and stored electronically. For secure transactions, the details of a signature can be analyzed to confirm the identity of a signer. With the ePad product family, it's easy to add signatures to electronic documents, anytime, anywhere!

The standard ePad

The standard ePad is designed for basic electronic signature capture. It is light-weight and self-powered via a USB or a Serial (RS232) port. This is ePadLink's standard model and has been implemented in hundreds of applications and environments where electronic signature is necessary.

The ePad-POS

This Point of Sale version is fully equipped for retail transactions and other receipt-signing applications. Like the standard ePad, it uses the VersaPad Semiconductive technology in its signing area. It is optimized for use with a ballpoint pen tethered to the ePad or passive stylus. The ePad-POS is the ideal pad for paper receipt signing. It comes in Serial and USB versions.

The ePad-ink

The ePad-ink allows electronic signature capture with interactive visual feedback via LCD. It is based on a ITO resistive touchpad technology. The 3" x 2.2", 300 d.p.i. screen is stylish and allows for powerful integration flexibility in any environment with its bi-directional communications capability. USB and Serial (RS232) versions are available.

The ePad-i.d.

With the ePad-i.d. you can capture signatures and perform fingerprint capture and verification. The fingerprint sensor is a CMOS active capacitive pixel sensing technology that is capable of 500 dpi image resolution and capture rate of 14 frames/seconds.

ePad II

The next generation of electronic signature technology from ePadLink, Inc., ePad II provides increased security and performance for mission critical applications. Integrating ePadLink's Semiconductive technology with advanced features such as, user definable report rates (up to 400 RPS) and unique serial ID, the ePad II provides higher signature definition and biometric repeatability. Optimized for use with a passive stylus, the ePad II is compatible with IntegriSign Signature Software Suite and proprietary applications in Windows 2000, XP and Vista.

ePad-ink Pro

Taking the legacy of the ePad-ink to the next level, this latest addition to the ePad product family comes jam-packed with features, such as Unique Serial ID, bi-directional communications, replaceable protective screen film for increased durability and USB connectivity for deployment flexibility. The ePad-ink Pro comes with a powerful new processor and a staggering 16 MB of flash.

ePad-i.d. Pro

This new addition to the ePad family combines the powerful features of the ePad-ink with the biometric capability of the ePad-i.d. Moreover, this ePad leverages the ePad-ink Pro's powerful hardware platform, which offers features such as Unique Serial ID, replaceable protective screen film, and USB connectivity.

ePad LS

ePad LS, with a best-in-class full color LCD display and ergonomic design, is perfect for capturing handwritten electronic signatures in high-volume customer applications. Providing signature data encryption and increased pad surface durability via a new fortified field-serviceable writing surface, ePad LS includes a bi-directional pressure-sensitive ITO display to present marketing messages to customers while capturing signatures. ePad LS is the first enterprise device to offer a fully programmable scrolling text window, enabling display of Rich Text documents utilizing multiple fonts and colors.

The contents of your package

Included in the box:

- ePad and tethered stylus.
- ePad-POS comes with only a tethered ballpoint pen
- ePad-i.d. comes with power adapter
- ePad-ink Pro and ePad-i.d. Pro products:
 - USB cable
 - Power adapter
 - Complimentary replaceable screen film
- Software Installation CD-ROM
- User Guide

The ePad Software Installation CD-ROM includes:

- ePad product family Drivers and diagnostic utilities
- Documentation
- Optional signature software

Installing your ePad

System requirements for all ePad products:

- Microsoft 2000, XP and Vista*
- Available 9-pin serial port (for Serial version), or USB port (for USB version)
- Optional:
 - Microsoft Terminal Services
 - Citrix ICA client (for use with Citrix Metaframe; see Thin Client Support Matrix section for more details)

** For more information on running your ePad on Vista, please read the README.HTM file installed with the drivers.*

Installing the ePad Serial/USB and ePad II

Installing the ePad Serial from CD-ROM

- Turn off computer. Plug ePad into a serial port.
- Turn on your computer and allow Windows operating system to boot up.
- Insert the ePadLink CD in the computer's CD-ROM drive and follow the instructions on the screen.
- If the ePad installation doesn't automatically start, you can install the drivers manually, by clicking the Windows Start button and clicking on Run.
- Type `d:\setup.exe` (where "d" is the letter representing your CD-ROM drive) in the Open text box, and then click the OK button.
- Follow the instructions on the screen to complete the installation.

Installing the ePad USB and ePad II from CD

There are 2 steps to install ePad software:

- Install ePad device
- Install ePad software drivers

Installing the ePad USB and ePad II device

Plug ePad device into an available USB port.

Installing the ePad USB and ePad II drivers

Insert CD-ROM and follow the instruction to complete the installation of ePad software drivers.

If the software installer does not automatically start, please perform the following steps:

- Run setup.exe from the CD-ROM. To do this, click START > RUN.
- Type d:\setup.exe (where "d" is the letter representing your CD-ROM drive) in the Open text box, and then click the OK button.
- Follow the instructions on the screen to complete the installation.

After the installation of ePad-ink software drivers is complete, the programs will be under START > PROGRAMS > EPADLINK > EPAD.

Installing the ePad-i.d. and ePad-i.d. Pro

Automatic software installation

IMPORTANT: Do not plug in the ePad-i.d. or ePad-i.d. Pro to the host computer until you have successfully installed the software drivers.

To install the software to run your ePad-i.d, follow these instructions:

- Insert the ePadLink CD-ROM in the CD-ROM drive on your computer.
- Follow the instructions on the screen.
- Click the Finish button to close the Wizard and complete the installation.

Manual ePad-i.d. software installation

If the InstallShield Wizard does not begin automatically when you insert the ePadLink CD-ROM, follow these instructions:

- Insert the ePadLink CD in the computer's CD-ROM drive.
- Click the Windows Start button and click on Run.
- Type `d:\setup.exe` (where "d" is the letter representing your CD-ROM drive) in the Open text box, and then click the OK button.
- Follow the instructions on the screen to complete the installation.

ePad-i.d. and ePad-i.d. Pro hardware installation

IMPORTANT: You must install the required software drivers before connecting the ePad-i.d.

Connecting the USB Cable

After installing the software drivers, follow these instructions to connect the ePad-i.d. USB cable to an available USB port on your computer.

- Locate an available USB port on your computer and connect the ePad-i.d. USB cable into it.
- The necessary drivers for the ePad-i.d. should automatically detect the ePad-i.d.

NOTE: If you have NOT installed the software, Windows will not recognize the ePad-i.d.

- During the installation, Windows may prompt you to insert the original Windows installation CD. You must insert the Windows installation disk to install the ePad drivers properly.
- Please review the `readme.htm` file found on the ePadLink program menu for further information.

Power Supply

The ePad-i.d. is designed to draw all its power from your computer's USB port. In most cases, the USB cable will provide sufficient power to operate the pad, but in some cases the optional AC adapter power supply may need to be attached to the pad.

With no accessories plugged into the rear USB ports, the unit draws up to 300mA @5V. The USB host supplies this, unless the power adapter is used. Accessories plugged in to the rear USB ports can draw up to 500mA of current each when the power adapter is used. If no power adapter is used, the maximum allowable current consumption by each accessory is 100mA.

WARNING: Only use the power adapter supplied with the product.

For example, if you have more than one device connected to the USB ports on your computer (e.g., a digital camera, a printer, a scanner) OR if you have devices attached to the USB port(s) on your ePad-i.d., your computer may not be able to supply the ePad-i.d. with enough power. In this case, the optional power supply can be used provide enough power to operate ePad-i.d and any devices connected to it.

To connect and use the optional power supply, follow these instructions:

- Plug the AC adapter connector into the ePadLink power terminal.
- Plug the AC adapter power plug into a 90 – 264VAC, 47 - 63HZ wall outlet.

Capture Ready LED

The ePad-i.d. includes a Capture Ready LED (light emitting diode). When the unit is ready to scan a person's thumb or fingerprint, the LED will blink with a green light.

The ePad-i.d. Pro requires the use of the external power supply (included).

Installing the ePad-ink and ePad-ink Pro

ePad-ink and ePad-ink Pro Software Installation

There are 2 steps to install ePad-ink software:

- Install ePad-ink device
- Install ePad-ink software drivers

Installing the ePad-ink and ePad-ink Pro Device

Plug ePad into a free USB port. The ePad-ink Serial can be connected to an available RS232 Serial port.

For the Serial version only, plug the power supply into the DB-9 Serial connector or use the PS/2 adapter cable.

The ePad-ink Pro requires the use of the external power supply (included).

CAUTION: USE ONLY THE POWER SUPPLY PROVIDED WITH THE PRODUCT.

Power requirements:

- Voltage: 5VDC +/- 5%
- Current: 150 mA max.

The LCD display should indicate the manufacturer's name and product name for approximately 3 seconds.

Installing the ePad-ink and ePad-ink Pro drivers

Insert CD ROM and follow the instruction to complete the installation of ePad software drivers.

If the software installer does not automatically start, please perform the following steps:

- Run setup.exe from the CD ROM. To do this, click START > RUN.
- Type d:\setup.exe (where "d" is the letter representing your CD-ROM drive) in the Open text box, and then click the OK button.
- Follow the instructions on the screen to complete the installation.

After the installation of ePad-ink software drivers is complete, the programs will be under START > PROGRAMS > EPADLINK > EPAD.

Uninstalling ePadLink' ePad Software

To uninstall an ePadLink ePad, you should use the Add/Remove Programs option found in the Windows Control Panel.

For information about the Add/Remove Programs option, refer to Windows Help.

Replacing the protective layer of the ePad-ink Pro and ePad-i.d. Pro

In order to increase the lifespan of the ePad-ink Pro and ePad-i.d Pro's signature sensor and LCD, a replaceable film is employed to protect the signing area. The film protects the LCD and sensor (called ITO). The protective film may, however become worn out after prolonged use. To ensure continued reliable use of the ePad, it is necessary to replace the protective film when it becomes worn out. To replace the protective film, please follow these steps:

- Remove bezel by inserting a rigid wire through the small pin hole in the lower mid section of the housing and applying direct force to release bezel. Use fingernail in lower mid window area to lift bezel up while applying force to the wire.
- Place thumb and finger on protective layer and squeeze together to release the protective layer and remove.
- Install new protective layer making sure dovetails align in their seats.
- Snap bezel back in place.

Installing the ePad LS

There are 2 steps to install ePad LS in your system:

- Install ePad LS device
- Install ePad LS software drivers

Installing the ePad LS hardware

The ePad LS power and data cable uses a new design, where only one cable reaches the ePad LS unit itself, a USB connector for the host computer is at the other end and a power supply adapter connects in between.

Assembling the data/power cable is easy:

- Plug the mini-D connector to the ePad LS port, located in the receding bay (bottom) of the ePad.
- Plug the power supply to a power source and attach the other end to the ePad LS data/power cable, at the reception block.
- Plug the USB connector to the host computer.

Note: The ePad LS requires the use of the external power supply (included) at all times.

CAUTION: USE ONLY THE POWER SUPPLY PROVIDED WITH THE PRODUCT.

The LCD display should indicate the product name for approximately 3 seconds.

Installing the ePad LS

Insert CD ROM and follow the instruction to complete the installation of ePad software drivers.

If the software installer does not automatically start, please perform the following steps:

- Run setup.exe from the CD-ROM. To do this, click START > RUN.
- Type d:\setup.exe (where "d" is the letter representing your CD-ROM drive) in the Open text box, and then click the OK button.
- Follow the instructions on the screen to complete the installation.

After the installation of ePad LS software drivers is complete, the programs will be under START > ALL PROGRAMS > EPADLINK > EPAD.

Replacing the protective layer of the ePad LS

In order to increase the lifespan of the ePad LS signature sensor and LCD, a replaceable film is employed to protect the signing area. The film protects the LCD and sensor (called ITO). The protective film may, however become worn out after prolonged use. To ensure continued reliable use of the ePad, it is necessary to replace the protective film when it becomes worn out. To replace the protective film, please follow these steps:

- Remove bezel by pushing on the button located below the front area of the ePad LS. Apply direct force to release bezel.
- With your fingers and starting from the upper right corner, peel off the old protective layer.
- Install new protective layer making sure dovetails align in their seats and the edges are secure. You can run your finger around the edges of the protective layer to ensure the protective layer is not out of place.
- Snap bezel back in place.

Miscellaneous

Specifications

Technology:	<ul style="list-style-type: none"> ePad USB, Serial, ePad II and ePad-POS: VersaPad Semiconductive ePad-i.d.: VersaPad Semiconductive and Capacitive Fingerprint ePad-ink, ePad-ink, ePad-ink Pro, ePad-i.d. Pro and ePad LS: ITO resistive analog touchpad
Models:	Three package configurations available: <ul style="list-style-type: none"> Single unit with IntegriSign and drivers Single unit with drivers only Single unit with drivers only, plus European plug set (for units with power supplies)
Compatibility:	All models: Windows 2000 SP4, XP and Vista.
Actuator Type:	<ul style="list-style-type: none"> ePad-POS: Optimized for ball point pen over paper All models USB and Serial: Optimized for ordinary (passive), tethered stylus
Software Included:	<ul style="list-style-type: none"> Standard configuration: Drivers for entire ePad family and IntegriSign signature suite. Drivers-only configurations available.
Report Rate:	<ul style="list-style-type: none"> ePad II, ePad-ink Pro, ePad-i.d. Pro and ePad LS: 100 to 400 reports/second All other models: 100 reports/second
Resolution:	<ul style="list-style-type: none"> Standard ePad and ePad-POS: 300 counts per inch. ePad-i.d. and ePad-i.d. Pro: 300 dpi (touchpad)/ 500dpi (fingerprint sensor) ePad-ink, ePad-ink Pro and ePad LS: 300 dpi (touchpad)
Encryption:	<ul style="list-style-type: none"> ePad-ink Pro, ePad-i.d. Pro: <ul style="list-style-type: none"> - 125, 192 and 256-bit AES - 64-bit DES and 192-bit triple DES (3DES) ePad LS: 256-bit AES (optional)

Display Size/ Resolution:	<ul style="list-style-type: none"> ePad-ink, ePad-ink Pro and ePad-i.d. Pro: 320 (H) x 240 (V) pixels, 3.8" diagonal screen and 300 dpi ePad LS: Full Color 5.7" (diagonal) LCD Signing area 4.5" x 3.5"
Z-Axis/Levels of pressure:	<ul style="list-style-type: none"> ePad USB, Serial, ePad-POS and ePad-i.d.: 128 levels of pressure
Hardware Interface:	<ul style="list-style-type: none"> RS232/Serial port or USB port for respective models. The ePad-i.d., ePad-i.d. Pro, ePad-ink, ePad-ink Pro, ePad LS and ePad II are USB only.
Power:	<ul style="list-style-type: none"> Standard ePad, ePad-POS, ePad II and ePad-ink: Self powered from standard RS232 or USB port for the respective pads ePad-i.d.: Self-powered from USB port. Cameras or other devices plugged into the ePad-i.d.'s hub will need external power ePad-ink Pro, ePad-i.d. Pro and ePad LS: External power supply (provided) IE ePad-ink Serial Euro version: Power supply or PS/2 adapter cable
Dimensions:	<ul style="list-style-type: none"> ePad Serial, USB and ePad-POS: 121mm x 138mm x 13mm (6.94" x 5.45" x 0.51") ePad II: 146.04mm x 152.49mm x 13.97mm (5.75" x 6.00" x .550") ePad-i.d.: 195mm x 155mm x 41mm (7.7" x 6.1" x 1.6") ePad-ink USB and Serial: 151mm x 151mm x 41mm (5.94" x 5.94" x 1.61") ePad-ink Pro and ePad-i.d. Pro: 190mm x 155.45mm x 42.42mm (7.68" x 6.12" x 1.67") ePad LS: 212.7mm x 187.3mm x 50mm (8.4" x 7.4" x 2")

Signing area:	<ul style="list-style-type: none"> • ePad Serial & USB: 88.91mm x 38.15mm (3.5" x 1.5") • ePad-i.d.: 88.91mm x 38.15mm (3.5" x 1.5") • ePad-ink (Monochrome LCD): 76mm x 56mm (3" x 2.2") • ePad-ink Pro and ePad-i.d. Pro: 81mm x 6mm (3.19" x 2.40") • ePad LS: 114.3mm x 88.9mm (4.5" x 3.5")
Weight:	<ul style="list-style-type: none"> • Standard ePad, ePad-POS and ePad II: 0.26kg (0.58 lbs.) • ePad-i.d.: 0.34 kg (0.75 lbs) • ePad-INK: 0.35 kg (0.75 lbs) • ePad LS: 0.65 kg (1.43 lbs)
Temperature:	<ul style="list-style-type: none"> • ePad Serial & USB: Operating: 0°C to +45°C (32°F to 113°F) Storage: -40°C to +70°C (-40°F to 158°F) • ePad II: Operating: 0°C to +50°C (+32°F to +113°F) Storage -40°C to +70°C (-40°F to +158°F) • ePad-i.d.: Operating: 0°C to +40°C (+32°F to +104°F) Storage: -15°C to +70°C (+5°F to +158°F) • ePad-ink: Operating 0°C to 45°C (32°F to 113°F) Storage -15°C to +70°C (+5°F to +158°F) • ePad-ink Pro and ePad-i.d. Pro: Operating 0°C to +40°C (+32°F to +113°F) Storage -15°C to +70°C (+5°F to +158°F) • ePad LS: Operating: 0°C to +40°C (+32°F to +113°F) Storage: -15°C to +70°C (+5°F to +158°F)
Humidity (Operating):	<ul style="list-style-type: none"> • ePad USB, ePad-POS and ePad II: 10-95% RH, non condensing • ePad-i.d. and ePad-ink: 10-85%RH, non-condensing • ePad-ink Pro and ePad-i.d. Pro and ePad LS: 10-80% RH, non-condensing
Approvals and Certifications:	<ul style="list-style-type: none"> • ePad-i.d. and ePad-ink: FCC part B, CB and CE • Standard ePad, ePad II, ePad-i.d. Pro, ePad-ink Pro and ePad LS: FCC and CE

Thin Client Support Matrix

Thin Client	Microsoft Terminal Services	Citrix ICA
WYSE 3125 (WinCE v4.0 w/optional CE.NET)	ePad USB, ePad-ink Serial	ePad USB, ePad-ink Serial
WYSE 3200 (WinCE 2.12)	--	ePad USB
WYSE 9000 (XPE)	All ePads, except ePad-i.d and ePad-i.d. Pro*	All ePads, except ePad-i.d and ePad-i.d. Pro*
Win32 (Win 2000 to Vista)	All ePads, except ePad-i.d and ePad-i.d. Pro*	All ePads, except ePad-i.d and ePad-i.d. Pro*

* The ePad-ink Serial is supported only by COM redirection, which is available in all versions of Citrix ICA and Windows Server 2003.

Troubleshooting

Having trouble? Try the following tips to get your ePad up and running:

- For Serial ePads, make sure you are running 2000 or XP.
- For USB ePads, make sure you are running Windows 2000, XP or Vista.
- Try restarting Windows; Windows can be sensitive to its treatment of memory and resources. Often restarting and /or powering computer off and back on, will clear up problems.
- Check your connections – make sure ePad is securely connected to the serial port or USB port.
- After the installation, check to see if the ePad is functioning at a lower level (driver level): Start Windows Explorer and browse to the C:\Program Files\EPadLink\ePad\Diagnostic folder. In there you should look in the corresponding ePad's folder for diagnostic tools for each ePad type.
- For the serial ePad, if you have infrared devices on the computer (sometimes found in laptops), disable them prior to installation. You can always enable these infrared devices after the ePad is successfully installed.
- It may be necessary to disable any serial devices before installing the ePad Serial version. Like the IR devices, you can re-enable the serial devices after the successful installation of the ePad Serial.
- More information can be found online by going to: www.epadsupport.com and clicking on FAQs (Frequently Asked Questions).

Care and Maintenance

ePadLink' Signature ePads are durable and will last for many years. Proper care and maintenance, however, will better guarantee the reliability and performance of your ePad over its lifetime.

The only periodic maintenance your ePadLink ePad requires is to keep it clean. A dirty pad surface may interfere with moving your stylus smoothly across the surface and can make it hard to capture thumb- and fingerprints.

Maintain the ePadLink' Signature Pad properly by following these guidelines:

1. Never leave the pad exposed to the sun for long periods of time. If you keep the pad locked in a car on a hot day, leave a window cracked to help with ventilation and keep the pad in a carrying case or shaded area of the vehicle.
2. To clean the pad, follow these guidelines:
 - a. Use any mild liquid household cleaner or rubbing alcohol.
 - b. Apply a small amount of cleaner to a soft, non-abrasive cloth and wipe the pad or sensor.
 - c. Be sure to wipe all cleaner residue from the device.
 - d. Allow the alcohol to evaporate normally.

CAUTION:

- a. Do not pour cleaner or alcohol directly onto the device. Apply the cleaner to a soft cloth first.
- b. Do not use De-Natured Alcohol. This will damage the plastic case.
- c. Do not allow liquid to drip inside the unit.
- d. Do not scratch the fingerprint sensor surface.
- e. Do not expose the device to extreme cold or heat as per the temperature and humidity specifications.
- f. Do not put objects pressing against the signature pad area when storing the device.
- g. Do not use ballpoint pen or other sharp objects. Use only the supplied stylus. ePad-POS is the only model that is built to be used with a ballpoint pen.
- h. Do not use other power adapters. Use only the power adapter module supplied with the unit.

Contact Information

Technical Support

If you have any difficulties installing or using your ePad, please refer to the section of this User's Guide that relates to your problem. If you are still unable to resolve the problem, please call our Product Support team for assistance.

The toll free number for technical support is 800-520-3464.

Support FAQ available at www.epadlink.com. Technical support and Live Chat is available Monday through Friday from 8 a.m. – 5 p.m. Pacific Time.

Support via email: support@epadlink.com
Developer support via email: developer@epadlink.com

When contacting support, please have the following information available:

- Date and place of purchase
- Brand and model of computer
- Software you use with this product

Mailing Address
650 Cochran Street Suite 5
Simi Valley, CA 93065
800-520-3464
Fax: 805-520-0867

Web
www.epadlink.com

ePad-ink FCC Certification

This device complies with Part 15 of the FCC Rules. Operation is subject to the following two conditions:

1. This device may not cause harmful interference, and
2. This device must accept any interference received, including interference that may cause undesired operation.

This equipment has been tested and found to comply with the limits for a CLASS B digital device, pursuant to Part 15 of FCC Rules. These limits are designed to provide reasonable protection against harmful interference when the equipment is operated in a residential installation. This equipment generates, uses, and can radiate radio frequency energy and if not installed and used in accordance with the instruction guide, may cause harmful interference to radio communications. However, there is no guarantee that this radio interference will not occur in a particular installation. If this equipment does cause harmful interference to radio or television reception, which can be determined by turning the equipment on and off, the user is encouraged to try to correct the interference by one or more of the following measures:

- Re-orient or relocate the receiving antenna.
- Increase the separation between the equipment and receiver.
- Connect the equipment into an outlet on a circuit different from that to which the receiver is connected.
- Consult the dealer or an experienced radio-TV technician for help.

Notice: Any changes or modifications not expressly approved by the party responsible for compliance could void the user's authority to operate the equipment. This product is equipped with shielded cable. Extension cables, if used, must be shielded in order to comply with the emission limits.

CE Conformity

This product has been designed to meet requirements of CE radiated and conducted emissions, as well as all related susceptibility standards. Tests confirm this product meets these requirements.

CB Safety Certification

This product has been tested to and meets the requirements of CB safety standard. *

* Only for the products listed as such under "Approvals and certifications" section.

STANDARD END-USER LICENSE AGREEMENT

END USER SOFTWARE LICENSE

This legal document is an agreement (the "Agreement") between you, the end-user, and ePadLink. ("ePadLink").

1. Grant of License. The software on the accompanying diskette, CD-ROM or which you have downloaded has been developed by or licensed by ePadLink (the "Software"). The Software is licensed, not sold, to you for your use only on one (1) machine or on a computer file server at a single location within your internal network for the exclusive purpose of internal business use in accordance with the Documentation (as defined below). This license is non-exclusive and ePadLink reserves all rights not expressly granted to you in this Agreement. This license may be transferred only in connection with the accompanying ePadLink product.

2. License Fee. In consideration of the licenses granted herein, you must pay the license fee or other consideration for the Software and the documentation for the Software ("Documentation") as set forth in Exhibit A attached hereto.

3. Ownership of Software. Although you may own the product in which the Software is originally recorded, ePadLink retains all right, title and interest in and to the (a) Software and the Documentation, including all future enhancements, upgrades, updates and new releases; and (b) any know-how or any intellectual property contained in or associated with the foregoing. You acknowledge that the Software is ePadLink' property or is duly licensed by ePadLink from third party developers ("Third Party Developers") and contains valuable confidential, unpublished information developed, acquired or licensed by ePadLink at

great expense, including data processing algorithms, innovations and concepts. The Software is protected by copyright and other federal and state laws. You agree to use your reasonable best efforts to protect the Software from unauthorized reproduction, distribution, disclosure, use, or publication.

4. Copy Restrictions. You may make one (1) back-up copy of the Software, provided that such back-up copy is not installed on or used on any computer. Unauthorized copying of the Software is expressly forbidden.

5. Use Restrictions. You may not directly or indirectly (i) reverse engineer, decompile, disassemble or otherwise attempt to derive the source code of the Software; (ii) encumber, time-share, rent or lease or assign the rights granted by this Agreement; or (iii) adapt, translate, localize, port or otherwise modify any Software or permit anyone to engage in similar conduct.

6. Termination. This License is effective until terminated. This License will terminate automatically without notice from ePadLink if you fail to comply with any provisions of the License. Upon termination of this Agreement, all rights granted to you under this Agreement shall immediately terminate and revert to ePadLink and you will cease the use of the Software.

7. Warranty

7.1 Ownership. ePadLink represents and warrants that it has obtained all necessary rights in and to the Software necessary to grant the rights and licenses to you hereunder.

7.2 Performance. ePadLink represents and warrants that for 90 days from the date of sale of product (the "Warranty Period") to end-users consistent with the terms of this

Agreement, the Software will perform in accordance with the specifications and documentation therefore, and that the specifications and documentation accurately reflect the operation and use of the most current version of the ePadLink products, including Updates (as hereinafter defined), provided to you hereunder.

7.3 Warranty Disclaimer. EXCEPT FOR THE EXPRESS WARRANTY SET FORTH ABOVE, EPADLINK AND ANY THIRD PARTY DEVELOPERS MAKE NO OTHER WARRANTIES RELATING TO THE PRODUCTS, EXPRESS, STATUTORY OR IMPLIED, AND EXPRESSLY DISCLAIMS ANY WARRANTY, INCLUDING, WITHOUT LIMITATION, NON-INFRINGEMENT, FITNESS FOR A PARTICULAR PURPOSE OR MERCHANTABILITY EVEN IF EPADLINK HAS BEEN INFORMED OF SUCH PURPOSE.

8. Software Maintenance, Development and Support.

a. Maintenance. In the event of the discovery of any material failure of the Software to comply with the warranty of Section 7.2, above, ePadLink' sole liability and your sole remedy shall be, at ePadLink' Option, either: (i) return the License Fee; or (ii) repair or replacement of the Software; provided, however that ePadLink received written notice of such failure within the Warranty Period.

b. Upgrades, Bug Fixes and New Releases. ePadLink shall make available to you updates, upgrades, bug fixes and new versions of the ePadLink Software (collectively, "Updates") which ePadLink generally releases to its customers from time to time.

9. Indemnification.

a. Infringement Indemnification by ePadLink. ePadLink shall indemnify, defend and hold you harmless from any

claims, demands, liabilities, losses, damages, judgments, and all costs and expenses related thereto (including reasonable attorneys' fees), to the extent resulting from any claim that the Software, or any portion thereof, or your use thereof, infringe or violate any copyright, patent, trade secret, license, or other proprietary right of a third party. In the event that the Software or any portion thereof is held to constitute an infringement and its use is enjoined, ePadLink shall have the obligation to, at its expense, (i) modify the infringing portion of the Software without impairing in any material respect the functionality or performance, so that it is non-infringing, (ii) procure for you at ePadLink' expense the right to continue to use the infringing Software or (iii) replace the Software or portions thereof with equally suitable, non-infringing software. ePadLink shall have no liability for any claim of infringement based on (i) use or combination of any portion of the Software with any products or software not supplied by ePadLink, if such infringement would not have occurred without such use or combination, (ii) use of the Software by you, after having received notice from ePadLink that the Software infringes the proprietary rights of a third party, and ePadLink has performed one of the options in the preceding paragraph, or (iii) use of other than the latest unmodified version of the Software provided to you by ePadLink, if the infringement would have been avoided by the use of such version.

b. Indemnification Procedures. The indemnification obligation of ePadLink under Section 9a is conditioned upon the following: (i) you shall promptly notify ePadLink in writing of any claim of infringement by any third party; (ii) your giving ePadLink sole control over the defense and settlement of such third party claim; (iii) you, to the extent reasonable, cooperating with ePadLink in the defense or settlement of such third party claim. Your failure to promptly give notice shall affect ePadLink' obligation to

indemnify you only to the extent ePadLink' rights are materially prejudiced by such failure.

c. Indemnification of ePadLink. Except for the foregoing infringement claims, you shall indemnify and hold harmless ePadLink and any Third Party Developers, their directors, shareholders, officers, agents and employees harmless from and against any claims, demands or causes of action whatsoever, including without limitation those arising on account of your modification or enhancement of the Software or otherwise caused by, or arising out of, or resulting from, the exercise or practice of the license granted hereunder.

10. Limitation of Liability.

a. Consequential Damages Waiver. YOU ACKNOWLEDGE AND AGREE THAT THE CONSIDERATION WHICH EPADLINK IS CHARGING HEREUNDER DOES NOT INCLUDE ANY CONSIDERATION FOR ASSUMPTION BY EPADLINK OF THE RISK OF YOUR CONSEQUENTIAL OR INCIDENTAL DAMAGES WHICH MAY ARISE IN CONNECTION WITH YOUR USE OF THE SOFTWARE AND DOCUMENTATION. ACCORDINGLY, EPADLINK AND ANY THIRD PARTY DEVELOPERS SHALL NOT BE LIABLE FOR ANY LOSS OF USE, INTERRUPTION OF BUSINESS, OR ANY SPECIAL, INCIDENTAL, EXEMPLARY OR CONSEQUENTIAL DAMAGES OF ANY KIND (INCLUDING LOST PROFITS) REGARDLESS OF THE FORM OF ACTION WHETHER IN CONTRACT, TORT (INCLUDING NEGLIGENCE), STRICT PRODUCT LIABILITY OR OTHERWISE, EVEN IF IT HAS BEEN ADVISED OF THE POSSIBILITY OF SUCH DAMAGES.

b. Limitation of Liability. SUBJECT TO THE INFRINGEMENT INDEMNIFICATION PROVIDED FOR IN SECTION 9a OF THIS AGREEMENT, EPADLINK' AND ANY THIRD PARTY DEVELOPER'S AGGREGATE LIABILITY TO YOU

UNDER ANY CLAIMS ARISING OUT OF THIS AGREEMENT SHALL NOT EXCEED THE LICENSE FEES PAID TO EPADLINK PURSUANT TO THIS AGREEMENT.

11. Software License Agreement (Europe, Africa And Middle East) Important Notice To Customers. This product contains copyrighted computer programs, which are the inalienable intellectual property of ePadLink. This software is both integrated within the product and also contained on the accompanying data carrier. The purchase of this product from your dealer does not include ePadLink' Software or any associated rights of usage. ePadLink grants you, the user, the right to use the software solely in accordance with the conditions of this Agreement. By purchasing this product you agree to the terms of this license.

12. Third Party Beneficiaries. This Agreement is an agreement made expressly for the benefit of any Third Party Developers and any Third Party Developers shall be third party beneficiaries to this Agreement. It is the express intent of ePadLink and you, that each of you intends to benefit such Third Party Developers by this Agreement to enable such Third Party Developers to enforce the provisions of this Agreement. In their enforcement of the provisions of this Agreement, the Third Party Developers shall be entitled to all rights, protections and remedies of ePadLink under this Agreement.

13. Miscellaneous. This License is governed by the laws of the United States of America and the State of California. Your rights and obligations under this Agreement may not be assigned or assumed without the written consent of ePadLink. If any of the provisions of this Agreement are determined to be invalid, illegal, or unenforceable, such provisions shall be modified to the minimum extent necessary to make such provisions enforceable, and the validity, legality, and enforceability of the remaining

provisions of this Agreement shall continue in full force and effect. This Agreement shall be binding on, and shall inure to the benefit of, the parties to it and their respective heirs, legal representatives, and successors. No supplement, modification, or amendment of this Agreement shall be binding unless executed in writing by all the parties. This Agreement and the other documents to be executed to implement its provisions together constitute the entire agreement between the parties pertaining to the subject matter contained in them. No supplement, modification, or amendment of this Agreement shall be binding unless executed in writing by all the parties. Should any litigation or arbitration be commenced between the parties concerning the rights or obligations of the parties under this Agreement, the party prevailing in such litigation or arbitration shall be entitled, in addition to such other relief as may be granted, to a reasonable sum as and for its attorneys' fees in such litigation or arbitration. This amount shall be determined by the court in such litigation or arbitration or in a separate action brought for that purpose.

THIS PAGE LEFT BLANK ON PURPOSE



INTEGRISIGN™ DESKTOP

USER MANUAL

CAPTURE/BIND VERSION



IntegriSign Desktop User Manual

Copyright

This manual is copyright ePadLink, with all rights reserved. This manual may not be reproduced in any form without prior written permission from ePadLink.

Disclaimer

The instructions and descriptions contained in this manual were accurate for IntegriSign Desktop at the time of publication. IntegriSign Desktop product contents, however, are subject to change without notice. Therefore, ePadLink assumes no liability for damage incurred directly or indirectly from errors, omissions or discrepancies between the product and the manual.

Trademarks

Windows is a trademark and MS and MS-DOS and Microsoft are registered trademarks of Microsoft Corporation. MS-Office, MS-Word and MS-Excel are registered trademarks of Microsoft Corporation. All other brands and product names are trademarks or registered trademarks of their respective companies.

1. Welcome

Welcome to IntegriSign Desktop Electronic Signature Authentication Software. IntegriSign Desktop is easy to use, reliable and secure. This User Manual is intended to provide you all the information you need to install and use this product.

2. Where to find information

Whether you are new to IntegriSign Desktop or an experienced user, the following resources can help you get the most out of IntegriSign Desktop.

2.1 IntegriSign Desktop Help

IntegriSign Desktop Help is your principal source of information about this product. It is always available by way of IntegriSign Desktop Preferences Help. Pressing F1 in any of the screens in the IntegriSign Desktop Preferences brings up the related IntegriSign Desktop Help topic. Help describes how to perform a wide variety of tasks related to the use of IntegriSign Desktop.

To open IntegriSign Desktop Help:

- Click the Start button, and click on Programs.
- Click the IntegriSign Desktop and log in.
- Click on the IntegriSign Desktop Help options and the Help window appears.

Each tab helps you to locate information in a different way. Use the Contents tab to locate topics, the Index tab to lookup key words, and the Search tab to search for text.

3. Installing/Uninstalling IntegriSign Desktop

Each IntegriSign Desktop Software package includes:

- IntegriSign Desktop Software
- IntegriSign Desktop User Manual (normally, electronic copy)

If either of these items is missing, please contact EPadLink.

3.1 Before you begin

- IntegriSign Desktop runs on 32-bit Windows operating system, i.e. Windows 98/2000/XP or Win-NT 4.0 (Build 1381 with Service Pack 4 or higher).
- Your system should have a minimum of 20 MB free space on the hard drive, in addition to the free space requirements for Windows.
- Before installing a new version of IntegriSign Desktop, uninstall any older versions of IntegriSign Desktop on your machine.
- Close all the applications running on Windows.

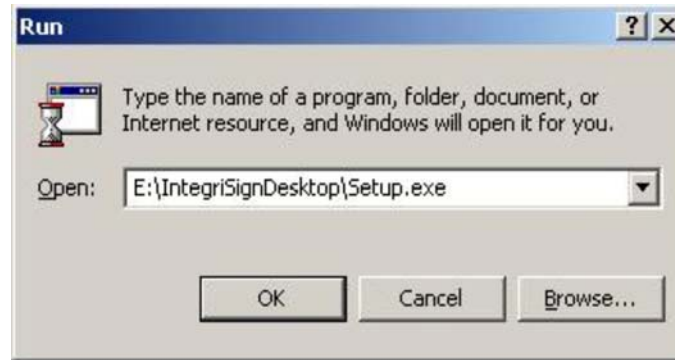
3.2 Installing the ePad device

Refer to the ePad Product Family User's Guide section for instructions on installing the device. Check if your computer recognizes the ePad.

3.3 Running IntegriSign Desktop Setup

The steps 1 & 2 below are specific to the IntegriSign Desktop setup from a CD. If you have downloaded the IntegriSign Desktop software from the Internet, please check the notes associated with the download & installation instructions.

1. The Auto Run program on the CD automatically launches a menu screen, which lists installing IntegriSign Desktop as one option.
2. In case the Setup does not start automatically, go to the '**IntegriSignDesktop**' folder on the CD drive and double click on the file named '**setup.exe**'. Setup may also be started from the '**Run**' option of the '**Start**' menu by typing "**E:\IntegriSignDesktop\Setup.exe**" (where E is CD drive designation)



3. After completion of the installation, you will be asked to restart the computer. Click 'OK' and restart the computer to enable proper registration of the IntegriSign Desktop components.

3.4 Known Installation issues

- To successfully install IntegriSign Desktop on Win NT (4.0 and later), the system should be upgraded with Win NT service pack 4 or later.
- For MS Office: If MS Office is not loaded properly, some files may not be installed properly. To rectify this, load MS office properly, and then repair IntegriSign Desktop by choosing the Repair option in the IntegriSign Desktop installation.
- If any other problem arises, please contact EPadLink.

3.5 Uninstalling IntegriSign Desktop

To uninstall IntegriSign Desktop:

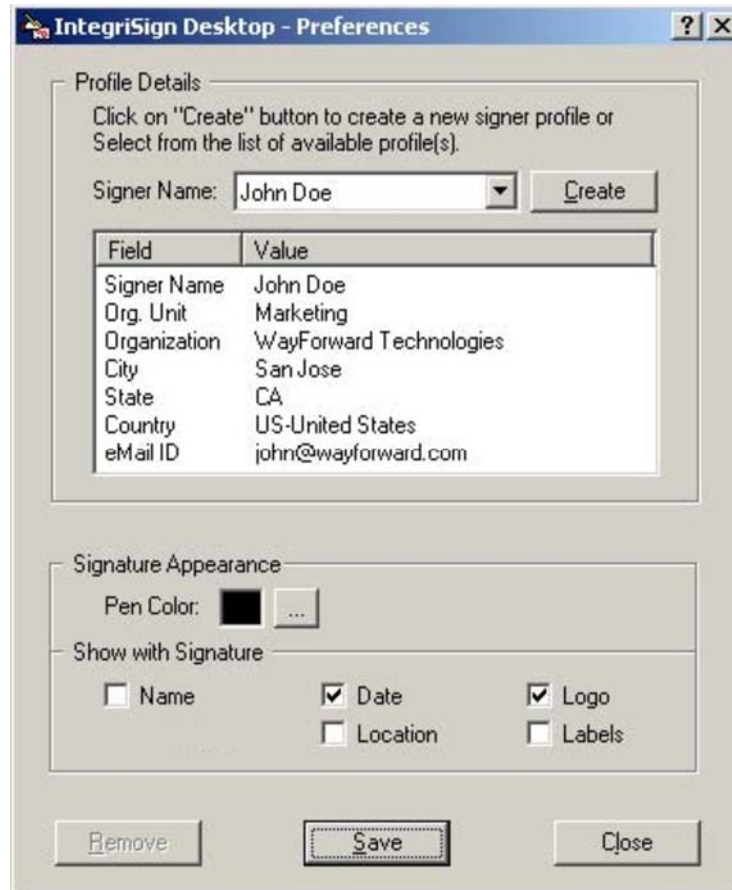
- Go to Start > Settings > Control Panel > Add/Remove programs.
- You will find IntegriSign Desktop listed, select IntegriSign Desktop and follow the instructions to uninstall the software.

Signatures that have been placed into documents are not removed.

Note: *Deleting the IntegriSign Desktop folder directly will not uninstall the software completely.*

4. Preferences

The IntegriSign Desktop Preferences window can be invoked from Start > Programs > IntegriSign Desktop > Preferences Manager or by clicking 'Preferences' button from the sign pad window. IntegriSign Desktop Preferences facilitates creation of profiles using the 'Create' button.



The image shows a screenshot of the 'IntegriSign Desktop - Preferences' window. The window has a title bar with a question mark and a close button. It is divided into two main sections: 'Profile Details' and 'Signature Appearance'.

Profile Details

Click on "Create" button to create a new signer profile or Select from the list of available profile(s).

Signer Name:

Field	Value
Signer Name	John Doe
Org. Unit	Marketing
Organization	WayForward Technologies
City	San Jose
State	CA
Country	US-United States
eMail ID	john@wayforward.com

Signature Appearance

Pen Color:

Show with Signature

<input type="checkbox"/> Name	<input checked="" type="checkbox"/> Date	<input checked="" type="checkbox"/> Logo
	<input type="checkbox"/> Location	<input type="checkbox"/> Labels

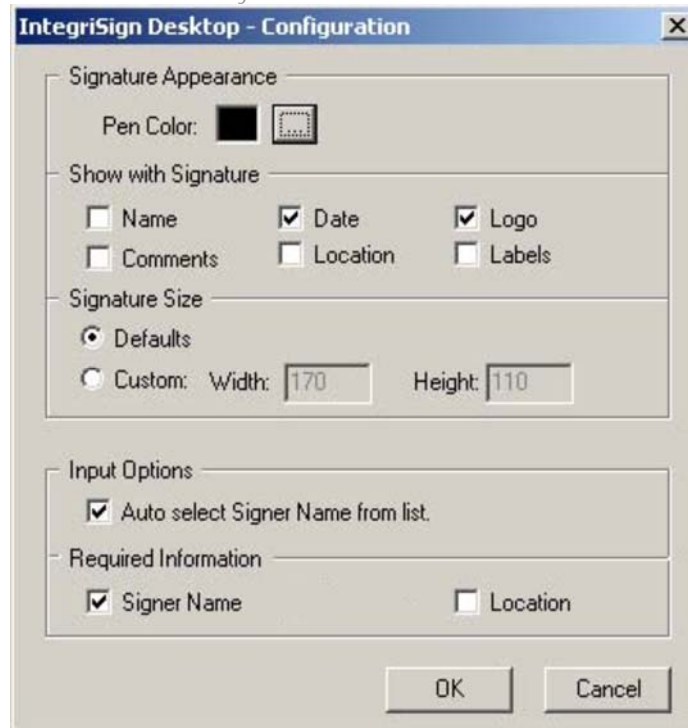
At the bottom of the window are three buttons: , , and .

The 'Pen Color' set is reflected only for the profile for which it is set. You also can set the details (like Name, Date, Location etc.) that can be shown along with the signature.

4.1 IntegriSign Desktop - Configuration

Pen Color and details to be displayed along with signature like Date, Logo etc. can be preset before creating a profile in IntegriSign Desktop - Desktop Configuration window. Start > Programs > IntegriSign Desktop > Desktop Configuration. Size of the signature placeholder can be preset using the Custom Signature Size setting option from IntegriSign Desktop - Desktop Configuration. Default signature placeholder size is Width – 170 and Height – 110.

The 'Auto select Signer Name from list' option selects the Signer Name automatically in the signing window when checked. Required Information lets you make Signer Name, Comments and Location fields mandatory.



4.2 Creating User Profile

User profiles can be created using 'Create' option available in the IntegriSign Desktop Preferences window. Enter details like Signer Name, Organization unit, Organization name, e-mail etc. Only Signer Name field is mandatory.

4.2.1 Public Signing

In Public Signing (e.g. customer signing) signer can just enter name in the Signer Name field and start signing using an ePad device. The 'Auto select Signer Name from list'

option in Desktop Configuration has to be unchecked for public signing in case a profile already exists.

4.3 Setting other Preferences

Other IntegriSign Desktop preferences include signature appearance and 'Show with Signature'. You can select signature details like Name, Date, Logo, etc. to be displayed below the signature in a signed document, simply by checking the respective boxes.

5. IntegriSign Desktop Plug-ins

The core utility of IntegriSign Desktop is to facilitate signing of electronic documents for authentication. IntegriSign Desktop plug-ins are the add-on software modules installed as part of the IntegriSign Desktop software installation. The applications include MS Word, MS Excel, MS Outlook, and Adobe Acrobat. The User documentation for IntegriSign Desktop Plug-ins can be found in the IntegriSign Desktop program group (Click on Start > Programs > IntegriSign Desktop > Documentation.)

The reasons for using the IntegriSign Desktop plug-in in an application are:

- Facilitate signing of the document with your personalized handwritten signature.
- To protect the integrity of the document after signing it.
- Establish 'who' signed the document, along with the place, date and time.

5.1 Overview

An IntegriSign Desktop plug-in allows you to create a document and sign it electronically with your handwritten signature using ePad device. The plug-in facilitates:

- **Signature Capture** - The signature trace is captured and stored on the electronic document in a signature object.
- **Content Hashing** - The signature object is bound to the contents of the document such that any alteration of the document after signing it would render the signature invalid. Since the signature object has been encrypted and bound to the document, it is not possible to cut/copy and paste this signature onto a different document.
- **Document Verification** – The document can be verified to ensure its integrity (i.e., confirming that it has not been tampered) after the act of signing.

THIS PAGE LEFT BLANK ON PURPOSE

DO NOT PRINT THIS PAGE

This page is for document control purposes and to provide printing instructions only.

Printing Instructions

Format: Book-bound style, two staples in the middle

Color: Color

Paper: 20+ weight, Laser paper (light gloss)

Special instructions

This manual uses a special page size in order to fit inside an ePad product box (5.5w x 7.75h inches). Since this manual will be a book-style manual it should be printed on 8.5 x 11 inch paper, which will then be folded in half. In order to make the resulting folded paper the correct length, **the edges must be cut, lengthwise (top and bottom) to the required size: 5.5"W x 7.75"H.**

DO NOT PRINT THIS PAGE